

CLEANSEAL DOOR SYSTEMS

MODEL 230/235

Paired Swinging Seamless Molded
Fiberglass Door System

MODEL 230 MANUAL | **MODEL 235 POWER**

EXCEPTIONALLY CLEAN

Totally seamless polyester gel-coat finish. Non-porous, non-shedding, and non-absorptive panel surface. Finish withstands fingerprints, fading, and corroding even when using harsh chemicals such as Vesphene, LPH, or SporKlenz. The exclusive mitered corners of the frame are fully welded, even through the throat, then painstakingly ground and polished, exceeding cGMP, FDA and EMEA requirements.

ULTIMATE DURABILITY

Heavy-duty seamless 16 ga., fully welded (including the throat) 304 #4 stainless steel frame. The resilient seamless fiberglass panel construction, internal steel frame and backing plates and external stainless steel edge capping, form an unmatched door system.

TIGHTEST SEAL

Utilizing a frame mounted, continuous three-sided perimeter gasket, coupled with a bottom sweep gasket and panel mounted center astragals.

MAXIMUM SECURITY

Variety of locking options electronic and mechanical to meet the strictest FDA/DEA requirements. Cleanseal will design and supply a state-of-the-art interlocking system from the basic two door interlock to an entire production floor.

COMPLETE TURNKEY SYSTEM

Cleanseal provides a complete door system from panel choice, frame design, hardware selection, and interlocking design, to complement any environment. This ensures an uninterrupted process in completing your project by maintaining a single source relationship.

SUPERIOR PERFORMANCE

Time-tested, the Excel door series has proven to be the benchmark for the strictest clean environment production areas worldwide. Over 10,000 door systems installed globally reflect our experience and customer satisfaction.

UNMATCHED QUALIFICATIONS

With over 40 years of combined experience, our professional sales consulting team will ensure your mission-critical requirements, while maintaining our uncompromising dedication to quality and value added service.

Shown with optional
vision panels



Bold Innovation. Superior Design. Unsurpassed Quality.

THE INDUSTRY'S UNPARALLELED DOOR SYSTEM OF CHOICE

Cleanseal's seamless molded fiberglass paired swinging door system is designed, engineered and precision manufactured with over 20 years of experience partnering with the leading pharmaceutical companies and architects across the country. With our all inclusive program we can engineer a complete interlock/access control system, packaged with the doors and hardware, to ensure flawless installation and start-up.

Using cutting-edge technology and exacting criteria for quality, Excel swinging doors have surpassed market demands and exceed cGMP, FDA and EMEA requirements. Our quest for uncompromising quality, and our steadfast commitment to meet our customers' ever-changing expectations, is evident in our ability to provide a comprehensive single source for all their door, hardware and integration needs.

CLEANSEAL
DOOR SYSTEMS

MODEL 230/235

Paired Swinging Seamless Molded Fiberglass Door System

MODEL 230 MANUAL | MODEL 235 POWER (SHOWN)

DESIGN AND CONSTRUCTION

DOOR SIZES:

- Up to 8'0" x 9'0".
(For additional sizes - consult factory.)

PANEL CONSTRUCTION:

- 1-3/4" thick structural seamless molded fiberglass panel with polyester gel-coat finish is non-porous, non-shedding, and non-absorptive.
- High-density closed cell poured-in-place polyurethane foam core.
- All hardware locations reinforced with internal steel backing plates.
- 20 gauge stainless steel edge capping for added protection and durability.
- White color standard. (Other colors available on request.)

FRAME CONSTRUCTION:

- 16 ga., 304 #4 stainless steel fully welded and polished (through frame faces and throat).
- Available in either single or double rabbet construction.
- Prepped for a wide variety of hardware options.

HARDWARE:

- Grade 1 Architectural hardware standard:
 - Hager BB1191 standard weight stainless steel fully mortised hinges.
 - LCN 4041 heavy-duty closer.
 - Stainless steel push/pull hardware.
 - Frame mounted, three-sided bulb type perimeter gasket, center astragal, and bottom sweep gasket.

PERFORMANCE FEATURES:

- Manual open with standard spring assist closer.
- Power operation utilizing an electromechanical operator, microprocessor controlled in 120 volt, single phase, with mechanical spring close.
- Operator completely enclosed within a 16 ga. 304 #4 stainless steel sloped shroud.
- Overhead presence sensor to provide threshold and swing side obstruction detection.
- Pushplate to open - time delay to close.
- In case of power failure, door can be opened manually at any time.

OPTIONS:

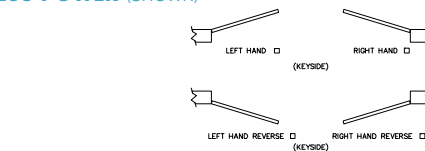
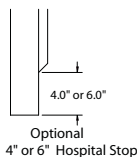
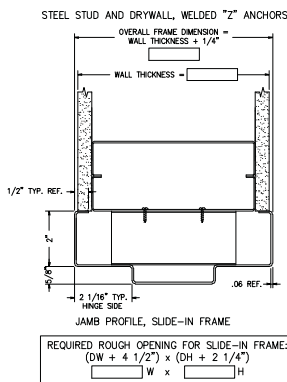
- Vision panel with standard sloped frame.
- CleanView® flush vision panel.
- All stainless steel construction available in 316L.
- 14 ga. stainless steel frames.
- Stainless steel clad panel. (Fire rated and non-rated).
- Custom color (consult factory).
- Custom designed interlocking system.
- Hospital stops 4" or 6".
- Stainless steel closer cover.
- Can provide any major lines and grades of architectural hardware.

OPTIONS (POWER MODELS ONLY):

- Touchless wall-mounted activation switch.
- Actuators: Variety of activation devices available upon request.

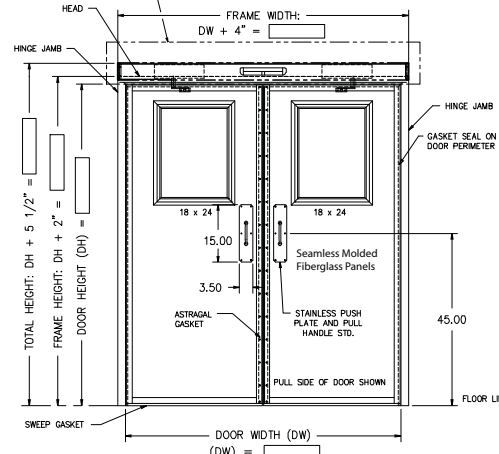
WARRANTY:

- One year limited warranty on all components.
- ASI reserves the right to modify specifications without notice.



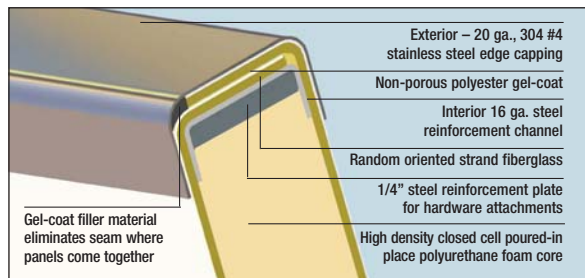
All electrical by others

NOTE: WALL MUST BE REINFORCED. OPERATOR IS MOUNTED DIRECTLY TO WALL. 7 GA PLATE, 5\"/>



FULLY MORTISED HINGES

(Shown on stainless steel door)
Flush mortised hinges provide a clean and smooth finish to the door.



SEAMLESS MOLDED FIBERGLASS CONSTRUCTION

Our exclusive process utilizing polyester gel-coat, offers a fiberglass door that is truly seamless. Cleanseal fiberglass doors are built to a higher standard so they withstand the harshest conditions and still look great year after year.



OPTIONAL FLUSH VISION PANEL

The CleanView® flush vision panel is the ultimate in clean technology design.



FRAME ASSEMBLY

Fully mitered and completely welded through the throat. Single or double rabbet.



SLOPED SHROUD FOR POWER UNITS

For superior cleanliness and aesthetic appeal.

THE PIONEER OF CLEAN ENVIRONMENT TECHNOLOGY

Cleanseal Doors | An ASI Technologies, Inc. Company
5848 North 95th Court | Milwaukee, WI 53225
PHONE: 414.464.6200 | FAX: 414.464.9863 | TOLL-FREE: 800.558.7068
www.cleansaaldors.com